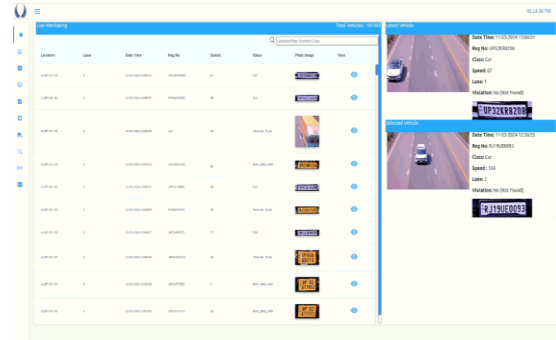




At a Glance

Speed Violation Detection System (SVDS) consists of a fixed ANPR camera, a fixed Radar and an attached Video Image processing unit. SVDS shall perform speed violation detection at designated spots on the highway section and optionally provide local warning to travellers using Speed Displays. The System shall communicate such detections to the ATMS Control Centre for storage, analysis, eChallaning & reporting. Sub-system Components are as follows:

- ⊖ RADAR.
- ⊖ ANPR Camera
- ⊖ IR Illuminators
- ⊖ Local Processing Unit
- ⊖ Speed Display
- ⊖ Aggregator PC (at Control Room)



**Selected Vehicle**

Date Time: 12-03-2024 13:20:45

Reg No: UP93BN5251

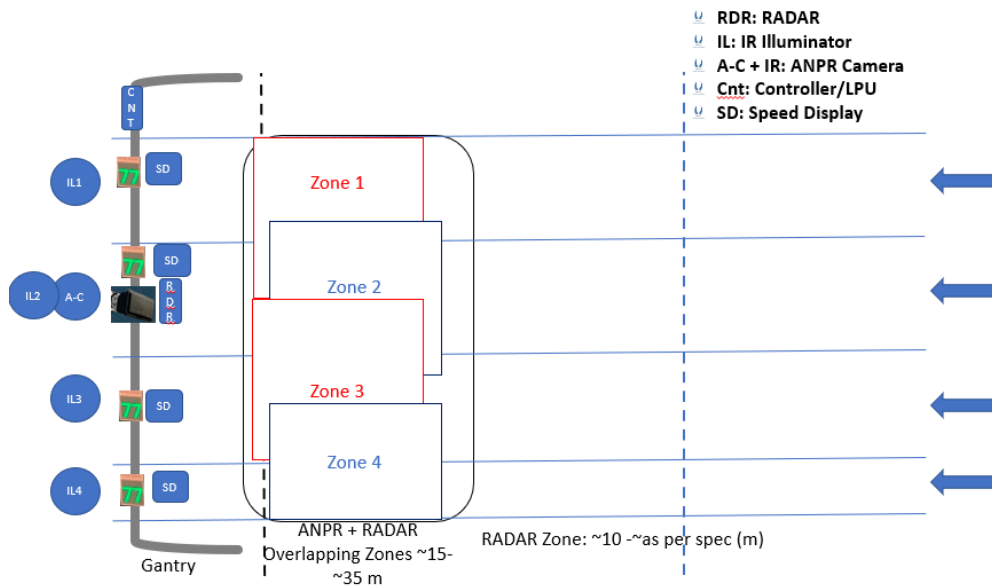
Class: Car

Speed: 134

Lane: 1

Violation: Yes

Subsystem Component layout



## Specifications of Roadside Cabinet (LPU)

Parameters	Specifications
Operating Voltage	220 V, 1 phase, 50 Hz AC
Power consumption	20 Watt
Protection	Short Circuit, Overload, Overvoltage, ESD
Operating Temperature	-20°C to +65°C
IP Protection Rating	IP 65
CPU-GPU	6/8-core ≥2 GHz
Memory	SSD 512 GB – as per Project requirements
OS	Linux
Connectivity	10/100/1000 BASE-T ETHERNET, RS-485
Cabinet Size	450 mm (L) x 450 mm (H) x 220 mm (D) (Approx.)
Material	MS (Powder Coated)
Mounting Arrangement	Gantry Mounted / Stand Mounted

## SVDS Reporting module

The screenshot displays the 'Reports' section of the SVDS Reporting module. It includes a search bar, filters for Report Type (ANPR), Lane Name (Lane 02), Start date time (3/12/2024, 2:00 PM), and End date time (3/12/2024, 2:10 PM). The main table lists vehicle data with columns for Location, Date Time, Plate Number, Speed, Class, and Plate Image. A 'Trash' button is visible at the bottom left of the table.

Location	Date Time	Plate Number	Speed	Class	Plate Image
ALEP CH -32	12-03-2024 14:11:51	UP32DX1888	89	Car	
ALEP CH -32	12-03-2024 14:11:35	UP82AQ9110	91	Car	
ALEP CH -32	12-03-2024 14:11:16	UP32MD0442	83	Car	
ALEP CH -32	12-03-2024 14:11:14	UP80GE5595	75	Car	
ALEP CH -32	12-03-2024 14:11:02	UP84Z9630	88	Car	
ALEP CH -32	12-03-2024 14:10:42	UP18BX786	102	Car	
ALEP CH -32	12-03-2024 14:10:18	UP18DL5424	99	Car	
ALEP CH -32	12-03-2024 14:09:56	NL61AD7731	46	TwoAxe_Truck	
ALEP CH -32	12-03-2024 14:09:25	UP83BA7315	82	Car	
ALEP CH -32	12-03-2024 14:09:06	CH91CH9817	84	Car	